

Account Structures

General ledger > Setup > Chart of accounts > Configure account structures

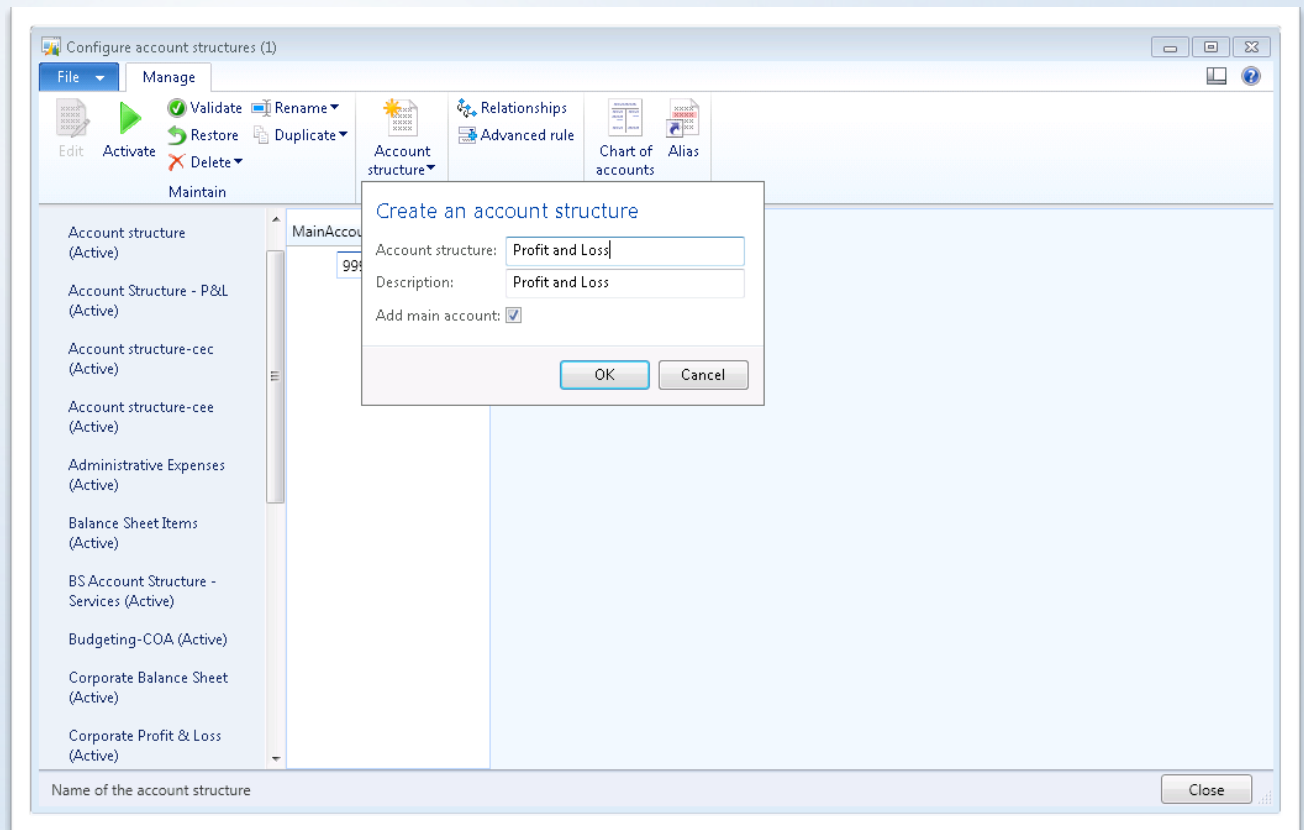
Summary Account structures link Main accounts and Dimensions. They define which Dimensions are active, and what Dimension values can be used together. Advanced rules allow Dimensions to be managed independently, making it easier to maintain the Account structure.

- Steps**
1. Create an Account structure
 2. Create an Advanced rule structure
 3. Create an Advanced rule
 4. Add Account structure to Chart of accounts

- Tips**
- Create two account structures: Balance sheet and Profit & loss
 - Treat Advanced rule structures as Dimension lists or Dimensions trees
 - Treat Advanced rules as ranges of Main accounts

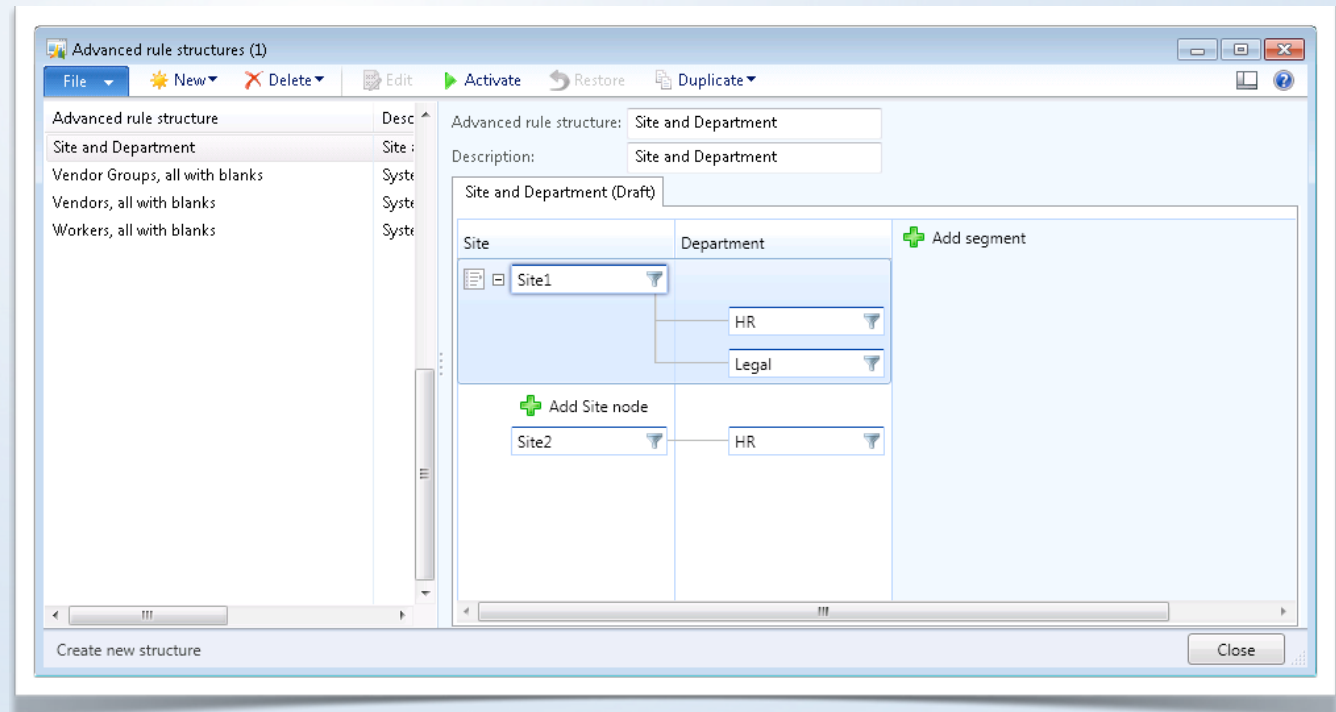
Create an Account structure

- Click the New **Account structure** button.
- Fill in **Account structure**.
- Use the same value as the **Description**.
- Leave **Add main account** checked.
- Click **OK**.
- Filter the **Main accounts** that are part of this Account structure.
- Following setup of Main accounts and Advanced rules, **Activate** the Account structure.



Create an Advanced rule structure

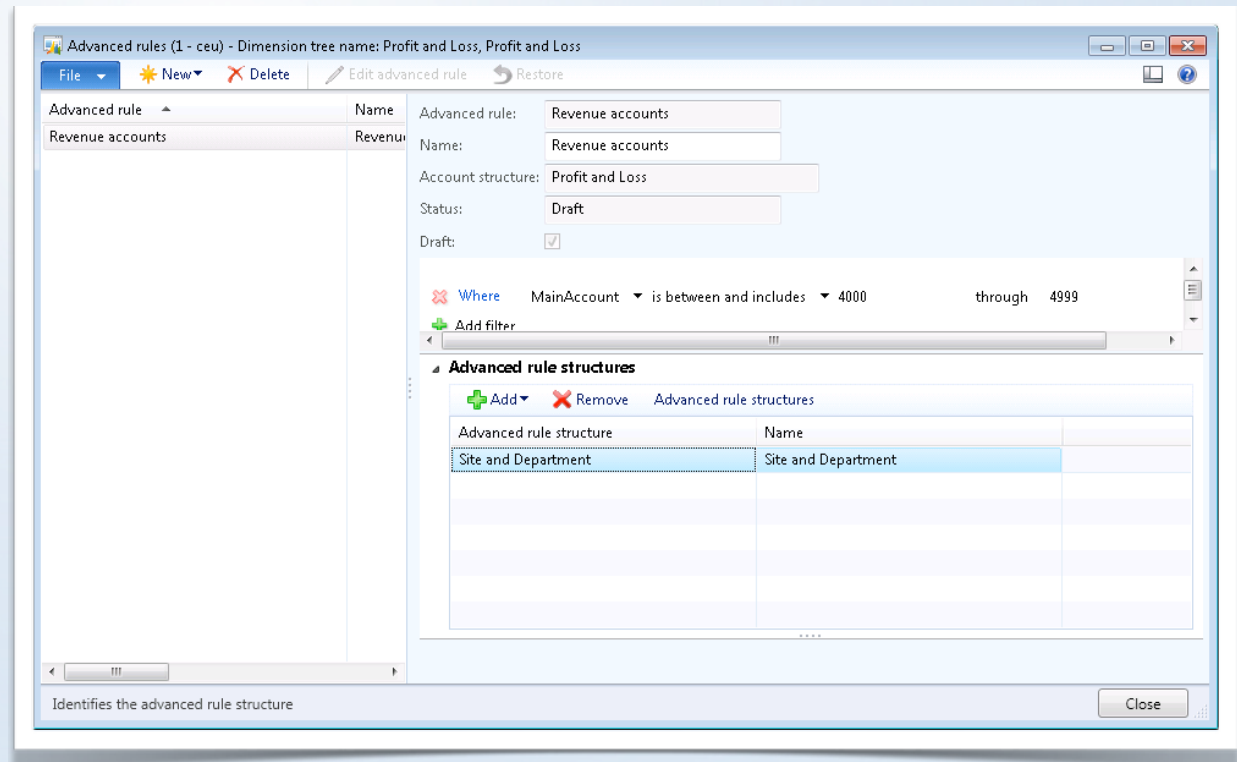
- Click the **New** button.
- Fill in **Advanced rule structure** and **Description** with the Dimension(s) used.
- Click **Add segment** and select a Dimension.
- Fill in allowed Dimension values and combinations.
- **Activate** the Advanced rule structure.



General ledger > Setup > Chart of accounts > Advanced rule structures

Create an Advanced rule

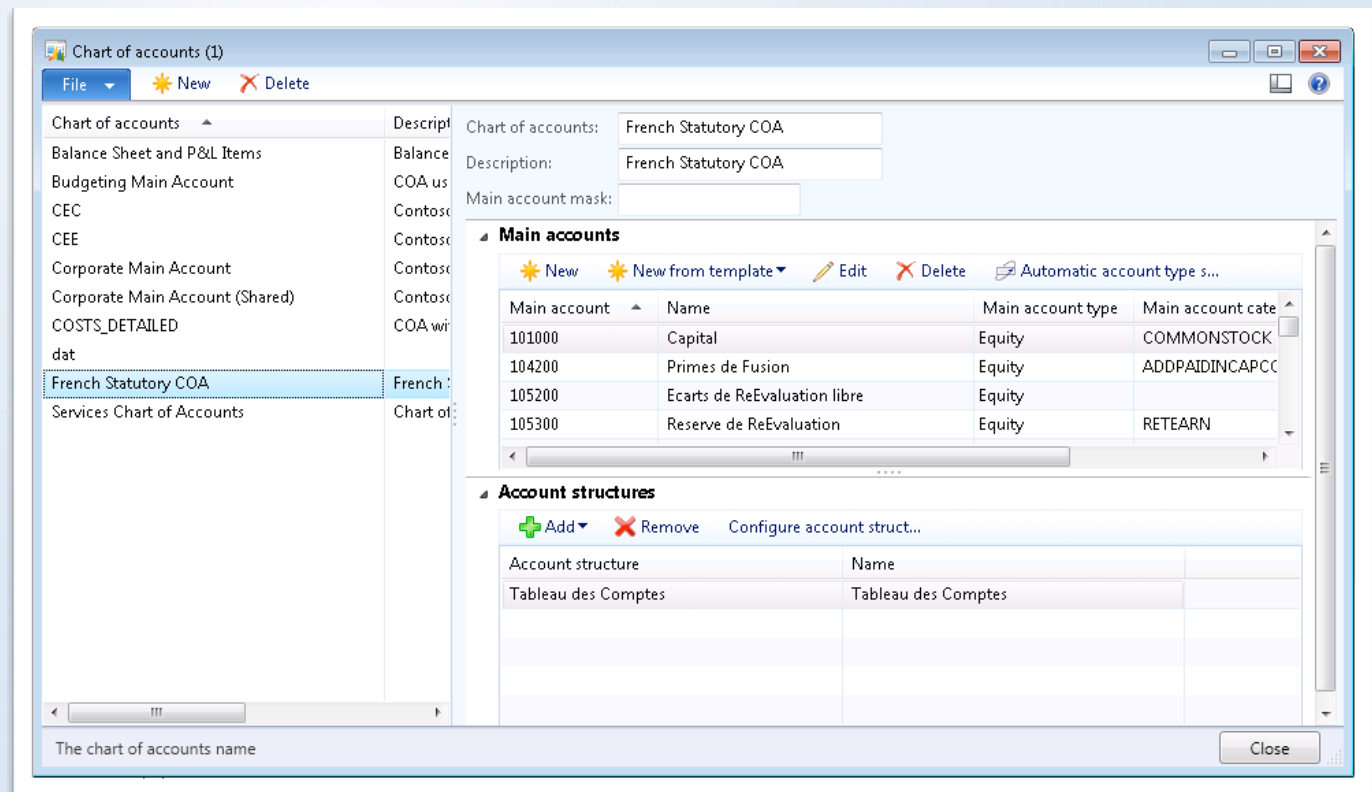
- Click the **New button**.
- Describe the filter criteria in **Advanced rule** and **Name**.
- **Add** a **filter** for a range of Main accounts.
- **Add** the Advanced rule structures for the Main accounts.



General ledger > Setup > Configure account structures > Advanced rule

Add Account structure to Chart of accounts

- **Add the Account structures** for a Chart of accounts.



General Ledger > Setup > Chart of accounts > Chart of accounts

Movie 1.3 Account Structure